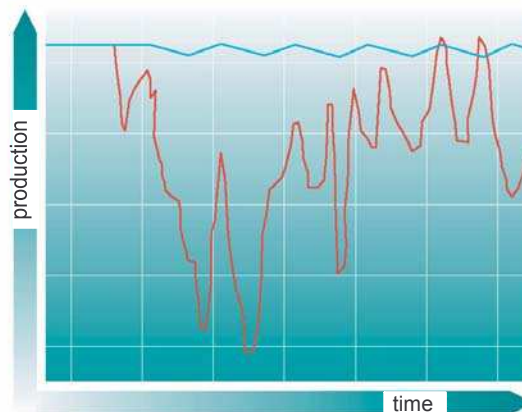


STRONG PRODUCTION THROUGH FLEXIBILITY

In order to lastingly remain competitive on the world market in the long view, each machine must render optimum performance in the production process. We have adopted this task and guarantee optimised production conditions with the help of our buffer systems. Since the 80ies, our company has developed and produced ROTZINGER Buffer Systems for production and packaging lines. As each transport product and each packaging line puts up different requirements, we have developed a comprehensive family of all types of buffers.

CONSTANT PRODUCT FLOW THROUGH PROCESS ISOLATION

By using buffer systems, individual consecutive processes – as for instance production and packaging – are isolated. Through this independence, each machine achieves maximum performance while granting a regular and continuous production flow. The diagram beneath clearly shows how malfunctions affecting the performance and production flow may be compensated for through the use of a buffer system.



With ACCUFLEX:
constant performance
and output

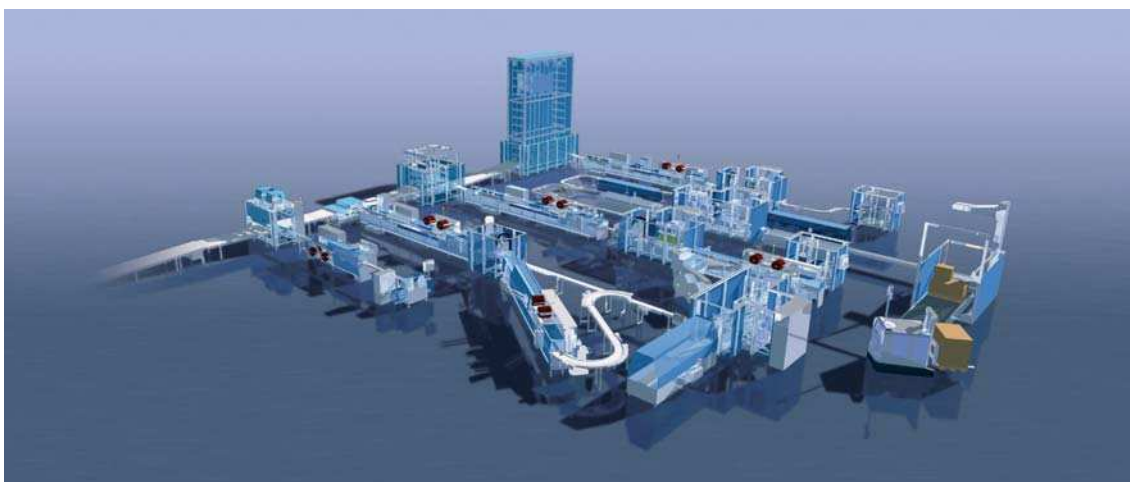
Without buffer:
stops and malfunctions,
thus drop in performance

INNOVATION IS OUR TRADITION

The ROTZINGER buffer systems are permanently optimised with reference to their performance, output and customer benefit. All buffers which allow for the loading of products on gondolas, may be unloaded twice as fast as before thanks to the use of the Fast Speed Unit (FSU). With the ACCUFEEDER, we have for example developed an extremely compact output station which also takes on buffer functions – while the FEEDING STORE allows for gently buffering even very complex or delicate products.

OPTIMISED PRICE-PERFORMANCE RATIO

By means of an in-house developed simulation program, a real-time simulation including all relevant parameters may be carried out efficiently. In this way, the perfect configuration with reference to price and performance is already determined at an early stage in the planning phase. Thus, the customer may convince himself/herself of the advantages and function/operational principle of a line with flexible buffering well in advance.



ALL ADVANTAGES AT A GLANCE**PRODUCTIVITY**

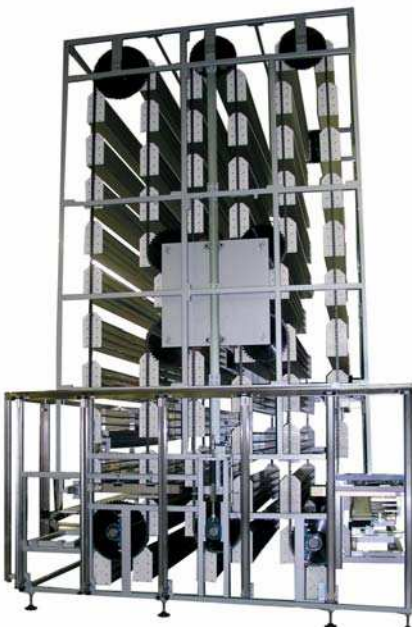
- bypassing of stops and breakdowns for continuous production flow
- no product loss or quality loss
- efficiency increase of up to 20%
- saves conventional supply systems
- low maintenance costs
- saves personnel and supplementary costs
- availability and efficiency > 99%
- optimised use of space through compact design & construction
- no additional costs for interfaces
- return of investment within short time
- retrofitting in existing systems possible

TECHNOLOGY AND HANDLING

- simple cleaning
- guarantees constant conditions for packaging machines
- simple interface to production and packaging machines
- constant production speed
- high buffer volume on extremely restricted space
- reliable, low-maintenance system
- combination with heating and cooling modules possible
- designed and construed using proven ROTZINGER modules
- maximum hygienic requirements guaranteed
- flexible installation through compact design & construction
- perfectly suited for a wide variety of products

SERVICE

- reliable and fast customer service
- individual planning
- continuous improvement process/performance maximisation of the buffers
- extensive training for operating staff
- user-friendly interfaces
- simulation option

**ACCUFLEX – The Classic Solution**

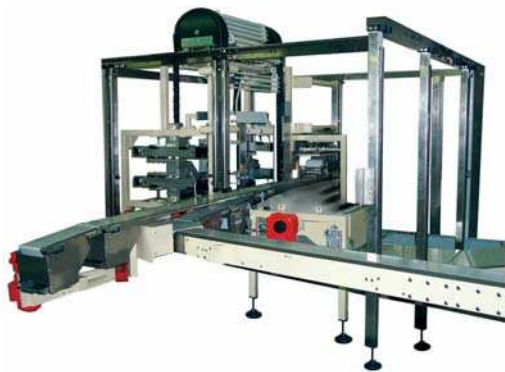
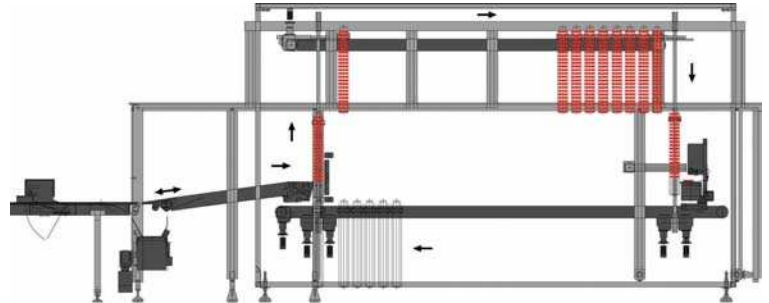
The efficiency of more than 200 systems – above all in the food industry – has been increased using this “First-in- First-out” buffer system worldwide. Due to picking up the products independently of the running speed of the neighbouring machines at maximum production output, these are transferred to the packaging machine without a gap or congestion. Breakdowns in the production process and resulting product losses therefore belong to the past thanks to the ACCUFLEX. Through the fast speed unloading unit where two product rows at a time are output, the ACCUFLEX renders top efficiency when feeding packaging machines.

Capacity:	2 – 100 min	
Output:	loading:	frontally: up to 150 rows/min with FSU laterally: up to 40 rows/min with 2 supply levels
	unloading:	frontally: up to 44 rows unloading of up to 80 rows/min laterally: 80 rows/min with 3 levels
Dimensions:	weight:	1.000 – 5.000 kg
	required space:	height: max. 8.000 mm length: max. 12.000 mm
Gondola: 1 – 6 trays		length: up to 1.600 mm (option: up to 2,600 mm) width: 100, 120, 140 mm (option: 300 mm)

COMPACT BUFFER – The New Solution

The COMPACT BUFFER is particularly suited for buildings with low ceiling heights. Multiple lines may be supplied. Another advantage is the automatic loading and unloading of the gondolas - for instance for the transfer to a washing machine.

Capacity:	up to multiple hours
Performance:	input: up to 120 rows/min
	output: up to 50 rows/min
Products:	length: 30 – 300 mm
	width: 20 – 300 mm
	height: 5 – 100 mm
Required space:	height: min. 3.000 mm
	length: max. 12.000 mm



ACCUFEEDER – The Isolated Solution

The ACCUFEEDER is a compact output station with flexible buffering. The “First-in-First-out” buffer takes care of a constant production speed and demand-tailored product supply to the subsequent machines under extremely restricted space conditions.

Capacity:	up to 40 rows
Performance:	flexible buffer up to 20 rows
	input: up to 120 rows/min
Products:	output (single): up to 45 rows/min
	output (double): up to 80 rows/min
Required space:	length: 20 – 200 mm
	height: 5 – 25 mm
	height: min. 3.000 mm
	length: max. 2.000 mm

ACCUPATERNOSTER – The Favourable Solution

Thanks to the simple operational principle (1 drive, 2 pairs of chains), the cost-effective “First-in First-out” buffer achieves an availability of more than 99%. Packaged products of different widths (up to 100 mm variance) are easily handled without adjustment. The ACCUPATERNOSTER may also be delivered as “First-in First-out” buffer as an option.

Capacity:	up to multiple hours
Performance:	up to 250 products/min
Products:	length: 60 – 400 mm
	width: 80 – 300 mm
	height: 5 – 200 mm
Required space:	height: min. 8.000 mm
	length: max. 4.000 mm



FEEDING STORE – The Gentle Solution

Due to the maximum reduction of processor internal processes (transport medium = buffer medium), this “First-in First-out” buffer is perfectly suited for complex or delicate products. Through the efficient operational principle, maximum operating safety and maximum productivity are achieved.

Capacity:	up to 60 m flexible buffer chain
Performance:	up to 50 m/min
Products: length:	max. 250 mm
	width: max. 150 mm
	height: max. 150 mm
Required space:	height: 2.000 mm
	length: 5.500 mm



REVOLVING BUFFER TOWER – The Mobile Solution

The REVOLVING TOWER BUFFER is perfectly qualified both as buffer and transport medium for round series products. As this “Fist-in Last-out” buffer is mobile, extremely long distances may be bridged. The compact design & construction of the stackable buffer allows for the highest storage capacity at a minimum of space.

Capacity:	buffering up to 100 min
Performance:	input: up to 400 products/min
	output: up to 400 products/min
Products:	diameter: 20 – 120 mm
	height: 8 to 80 mm
Required space:	height: 1.250 mm
	diameter: 1.250 mm



ACCUTRAY – The Cool Solution

The ACCUTRAY may be used as transit storage and as flex buffer. The products are carefully handled on rolltrays, an en tray buffer is integrated. As there is no propulsion technology in the isolated buffer area, the ACCUTRAY is perfectly suited to a heating or cooling module.

Capacity:	up to 2 hours
Performance:	100 trays/h
Products:	length: 50 – 500 mm
	width: 50 – 500 mm
	height: 250 – 300 mm
Required space:	height: 2.000 – 8.000 mm
	length: 3.000 – 12.000 mm

